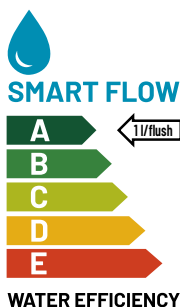


# Ceramic Urinal with the Radar Flushing Unit SLP 27S, SLP 27Z, SLP 27B



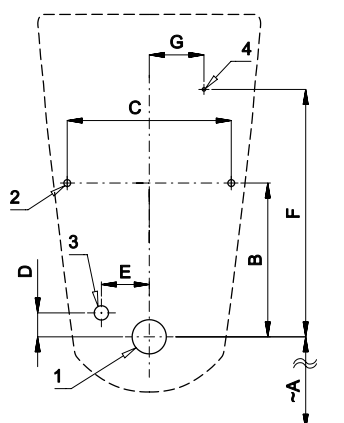
SLP 27 - CHIC

## Characteristics



- includes Bluetooth control  
(paid Sanela Control app available for download)
- economy flushing by 1 liter of water
- easy installation
- whole flushing unit is placed behind the urinal
- system reacts only on the direct use of the urinal  
(it analyses changes, which are proceeded inside of the urinal, when a liquid is flowing through)
- adjustable flushing time 0,5 - 15,5 s
- parameter setting and communication with the electronics via the Sanela Control app (Bluetooth) or by remote control SLD 04 without the necessity to dismantle the urinal from the wall (acoustic setting indication)
- automatic flushing after each 6 hours non-use
- possibility to regulate a water flow by the angle valve
- radar flushing unit recharges a water to the siphon after each flushing
- monitoring of battery capacity (for models with index B)

## Installation Drawing



- 1 - water outlet Ø 50 mm
- 2 - holes for fitting
- 3 - water supply
- 4 - power supply 24 V DC or 230 V AC

Dimensions (mm)	A	B	C	D	E	F	G
SLP 27 - Chic	475	225	240	35	70	360	80

\* for the height of the front edge of the urinal 650 mm above the floor

## Technical Specification

### Operating voltage

- SLP 27S 24 V DC
- SLP 27Z 230 V AC/50 Hz
- SLP 27B 6 V

### Power input

- operating by 24 V DC 8 W
- operating by 6 V 3 W

### Recommended flow pressure

0,1 - 0,6 MPa

### Rate of flow

18 l/min (inf. data)

### Water inlet

male thread G 1/2"

### Water outlet

inlet fitting with a rubber sealing



SLA 11



SLA 11A



SLA 11B



SLA 11C

## Supply Specification

- SLP 27S - Supply No. 01271 ceramic urinal with the radar flushing unit including Bluetooth module,
- SLP 27Z - Supply No. 01272 electromagnetic valve, connecting hoses, angle valve with filter and check valve,
- SLP 27B - Supply No. 01273 inlet fitting with a rubber seal, siphon, paper drill template, power supply (SLP 27Z), 4 pcs. AA alkaline batteries 1,5 V, 2700 mAh with battery case (SLP 23B)

## Recommended Accessories

SLZ 01Y	- Supply No. 05012	power supply 24 V DC for operating of max. 5 pcs. of flushing units
SLZ 01Z	- Supply No. 05011	power supply 24 V DC for operating of max. 9 pcs. of flushing units
SLZ 04Y	- Supply No. 05042	power supply 24 V DC on DIN rail, for operating of max. 5 pcs. of flushing units
SLZ 04Z	- Supply No. 05041	power supply 24 V DC on DIN rail, for operating of max. 9 pcs. of flushing units
SLZ 04X	- Supply No. 10049	power supply 24 V DC on DIN rail, for operating of max. 15 pcs. of flushing units
SLZ 06	- Supply No. 05060	power supply 24 V DC for operating of max. 1 pc. of flushing unit
SLD 04	- Supply No. 07040	remote control for an adjustment of parameters
SLA 11	- Supply No. 06110	deodorising urinal screen - orange colour, mango scent
SLA 11A	- Supply No. 06111	deodorising urinal screen - red colour, kiwi and grapefruit scent
SLA 11B	- Supply No. 06112	deodorising urinal screen - transparent colour, honeysuckle scent
SLA 11C	- Supply No. 06113	deodorising urinal screen - blue colour, cotton bloom scent
SLR 01L	- Supply No. 08015	mounting frame to the plasterboard for the urinal with radar flushing unit on the mounting rail
SLA 36	- Supply No. 06360	set of 4 pcs. alkaline batteries AA 1,5 V, 2700 mAh (for models with index B)
SANELA CONTROL APP		paid Sanela Control app available for download on the App Store and Google Play